



STATISTICS SIERRA LEONE (Stats SL)

Credible Data for National Development

CONSUMER PRICE INDEX PRESS RELEASE April 2026

Released: 15th May 2026 @ 12:00 noon



CONTACT PERSONS:

(1) Mwaluma Andrew Bryma GEGBE, MA, MSc

Director of National Accounts and
Economic Statistics Division

Statistics Sierra Leone (Stats SL)

Mobile: +23279442430/ +23288000898

Email: mwaluma.gegbe@statistics.sl

Skype: mwaluma.gegbe

(2) Isata M. ALLIEU-KEIKURA, MSc

Principal Statistician and Head,
Price and Labour Statistics Section

National Accounts and Economic Statistics
Division, Statistics Sierra Leone (Stats SL)

Mobile: +23276580842/ +23234580842

Email: isata.allieu-keikura@statistics.sl

Approved for release by:

Andrew Bob JOHNNY, MSc

Statistician General & CEO

Statistics Sierra Leone (Stats SL)

Email: andrew.johnny@statistics.sl

15th May 2026

CONTENTS

CONTENTS	i
LIST OF TABLES	ii
LIST OF FIGURES	ii
1.0 KEY FINDINGS	1
1.1 Headline Inflation Rates	1
1.2 Annual Year-On-Year (YOY) Consumer Price Inflation: Detailed by Main COICOP Headings ..	1
1.3 Month-on-Month (MoM) Consumer Price Inflation: Detailed by Main COICOP Headings.....	2
2.0 APRIL 2026 CONSUMER PRICE INFLATION: DETAILED BY REGIONS.....	5
3.0 FOOD AND NON-FOOD COMPONENTS.....	6
4.0 IMPACT CONTRIBUTIONS OF COICOP DIVISIONS TO ANNUAL INFLATION RATE (YoY) ..	8

LIST OF TABLES

Table 1:	National CPI and rates of inflation by main COICOP functions (December 2021=100) ...	4
Table 1.1:	National and Regional Year-on-Year and Month-on-Month Inflation rates.....	5
Table 2:	National and Western Region CPI, Year-on-Year and Monthly Inflation Rates	9
Table 3:	National Consumer Price Index by Main COICOP Groups (December 2021=100).....	11

LIST OF FIGURES

Figure 1a:	Regional Year-on-Year (Yearly) Inflation Rates.....	5
Figure 1b:	Regional Month-on-Month (Monthly) Inflation Rates.....	5
Figure 2.1:	Changes in the average prices of selected Food and non-alcoholic items	6
Figure 2.1a:	Percentage points changes in the Inflation rates of Non-Food components	7
Figure 2.2:	Trends in Inflation rates for Food, Non-food and All items (YoY) 2022 – 2026	7
Figure 3:	Impact Contributions of the COICOP Divisions to Inflation Rate (Mar.25 – Mar.26).....	8

1.0 KEY FINDINGS

1.1 Headline Inflation Rates

- Annual National Consumer Price Inflation (year-on-year) for April 2026 stood at 10.83 percent, **up by 0.59 percentage point** from 10.24 percent in March 2026.
- The Monthly Consumer Price Inflation for April 2026 is 1.37 percent; **down by 0.91 percentage point** from 2.28 percent in March 2026.
- Annual National Food and non-alcoholic beverages inflation for April 2026 is 3.56 percent, **down by 1.02 percentage point** from 4.58 percent in March 2026.
- Annual National inflation for Non-food is 16.62 percent in April 2026 from 14.68 percent in February 2026; **up by 1.94 percentage points**.

1.2 Annual Year-On-Year (YOY) Consumer Price Inflation: Detailed by Main COICOP¹ Headings

Upward Movers

Housing, water, electricity, gas and other fuels, with weight 8.90 percent, **increased** from 45.02 percent in March 2026 to 55.23 percent in April 2026; the inflation rate increased by 10.21 percentage points, year-on-year.

Transport, with weight 8.60 percent, **increased** from 22.27 percent in March 2026 to 32.96 percent in April 2026; the inflation rate increased by 10.69 percentage points, year-on-year.

Restaurants and hotels, with weight 6.10 percent **increased** from 12.44 percent in March 2026 to 16.14 percent in April 2026; the inflation rate increased by 3.70 percentage points, year-on-year.

Downward Movers

Food and non-alcoholic beverages, with weight 40.30 percent, **declined** by 1.02 percentage points from 4.58 percent in March 2026 to 3.56 percent in April 2026, year-on-year.

Alcoholic beverages, tobacco and narcotics, with weight 1.00 percent **declined** by 4.16 percentage points from -1.83 percent in March 2026 to -5.99 percent in April 2026, year-on-year.

¹ Classification of Individual Consumption by Purpose

Clothing and footwear, with weight 7.70 percent, **declined** by 5.89 percentage points from 8.57 percent in March 2026 to 2.68 percent in April 2026, year-on-year.

Furnishings, household equipment and routine household maintenance, with weight 5.60 percent **declined** by 0.10 percentage point from 2.72 percent in March 2026 to 2.62 percent in April 2026, year-on-year.

Health, with weight 7.60 percent, **declined** by 1.98 percentage points from 11.54 percent in March 2026 to 9.56 percent in April 2026, year-on-year.

Communication, with weight 4.70 percent, **declined** by 1.72 percentage points from 1.91 percent in March 2026 to 0.19 percent in April 2026, year-on-year.

Recreation and culture, with a weight of 2.60 percent, **declined** by 4.72 percentage points from 5.95 percent in March 2026 to 1.23 percent in April 2026, year-on-year.

Miscellaneous goods and services, with weight 3.90 percent, **declined** by 2.36 percentage points from 1.96 percent in March 2026 to -0.40 percent in April 2026, year-on-year.

Non-Mover

For Education services, with weight 3.10 percent, **no change** was noticed between March 2026 and April 2026, year-on-year.

1.3 Month-on-Month (MoM) Consumer Price Inflation: Detailed by Main COICOP² Headings

Upward Movers

Food and non-alcoholic beverages, with weight 40.30 percent **increased** from -0.15 percent in March 2026 to 0.73 percent in April 2026; the inflation rate increased by 0.88 percentage point, month-on-month.

Restaurants and hotels, with weight 6.10 percent, **increased** from 2.96 percent in March 2026 to 4.22 percent in April 2026; the inflation rate increased by 1.26 percentage points, month-on-month.

² Classification of Individual Consumption by Purpose

Downward Movers

Alcoholic beverages, tobacco and narcotics, with weight 1.00 **declined** by 3.85 percentage points from 1.15 percent in March 2026 to -2.70 percent in April 2026, month-on-month.

Clothing and footwear, with weight 7.70 percent, **declined** by 5.29 percentage points from 0.44 percent in March 2026 to -4.85 percent in April 2026, month-on-month.

Housing, water, electricity, gas and other fuels, with weight 8.90 percent, **declined** by 1.93 percentage points from 7.27 percent in March 2026 to 5.34 percent in April 2026, month-on-month.

Furnishings, household equipment and routine household maintenance, with weight 5.60 percent, **declined** by 4.51 percentage points from 1.16 percent in March 2026 to -3.35 percent in April 2026, month-on-month.

Health, with weight 7.60 percent, **declined** by 3.91 percentage points from 3.78 percent in March 2026 to -0.13 percent in April 2026, month-on-month.

Transport, with weight 8.60 percent, **declined** by 2.80 percentage points from 12.50 percent in March 2026 to 9.70 percent in April 2026, month-on-month.

Communication, with weight 4.70 percent, **declined** by 1.89 percentage points from 0.47 percent in March 2026 to -1.42 percent in April 2026, month-on-month.

Recreation and culture, with a weight of 2.60 percent, **declined** by 1.19 percentage points from -2.31 percent in March 2026 to -3.50 percent in April 2026, month-on-

Miscellaneous goods and services, with weight 3.90 percent **declined** by 2.89 percentage points from 1.80 percent in March 2026 to -1.90 percent in April 2026, month-on-month.

Non-Mover

For Education services, with weight 3.10 percent, **no change** was noticed between March 2026 and April 2026, month-on-month.

Table 1 below shows the National Consumer Price Indexes of the months of April in 2025, January, February, March and April in 2026; and their inflation rates by the 12 main COICOP functions.

Table 1: National CPI and rates of inflation by main COICOP functions (December 2021=100)

COICOP	WEIGHT	Apr-25	Jan -26	Feb -26	Mar -26	Apr-26	Inflation Rates		
		Month Previous Year-	Month m-3 for Current Year	Month m-2 for Current Year	Month m-1 for Current Year	Month m for Current Year	Monthly Inflation	3 Months Change Inflation	12 Months Inflation
Food and Non-Alcoholic Beverages	40.3	265.74	266.98	273.61	273.19	275.19	0.73	3.08	3.56
Alcoholic Beverages, Tobacco and Narcotics	1.0	199.02	188.08	190.11	192.30	187.10	-2.70	-0.52	-5.99
Clothing and Footwear	7.7	198.85	211.31	213.64	214.58	204.17	-4.85	-3.38	2.68
Housing, Water, Electricity, Gas and Other Fuels	8.9	200.68	253.85	275.70	295.73	311.51	5.34	22.71	55.23
Furnishings, household equipment and routine household maintenance	5.6	257.17	270.03	269.93	273.07	263.92	-3.35	-2.26	2.62
Health	7.6	226.87	231.83	239.80	248.87	248.55	-0.13	7.21	9.56
Transport	8.6	229.40	235.92	247.16	278.05	305.02	9.70	29.29	32.96
Communication	4.7	154.11	157.02	155.89	156.63	154.41	-1.42	-1.66	0.19
Recreation and Culture	2.6	247.26	264.56	265.50	259.37	250.29	-3.50	-5.39	1.23
Education Services	3.1	181.23	196.79	196.79	196.79	196.79	0.00	0.00	8.59
Restaurant and Hotels	6.1	323.54	349.22	350.18	360.53	375.76	4.22	7.60	16.14
Miscellaneous Goods and Services	3.9	235.95	235.53	233.40	237.59	235.00	-1.09	-0.23	-0.40
All Items	100.0	241.61	251.94	258.26	264.14	267.77	1.37	6.28	10.83

The national monthly Consumer Price Index (CPI) moved from 264.14 in March 2026 to 267.77 in April 2026, causing a month-on-month (MoM) inflation of 1.37 percent for April 2026.

Also, the national yearly CPI moved from 241.61 in April 2025 to 267.77 in April 2026, causing a year-on-year (YoY) inflation of 10.83 percent for April 2026; indicating a 0.59 percentage point increase when compared with 10.24 percent in March 2026.

2.0 APRIL 2026 CONSUMER PRICE INFLATION: DETAILED BY REGIONS

Table 1.1: National and Regional Year-on-Year and Month-on-Month Inflation rates

December 2021=100												
Month	National		Western Area		Eastern Region		Southern Region		Northern Region		North-west Region	
	Year-On-Year	Month-on-Month	Year-On-Year	Month-on-Month	Year-On-Year	Month-on-Month	Year-On-Year	Month-on-Month	Year-On-Year	Month-on-Month	Year-On-Year	Month-on-Month
March 2026	10.24	2.28	14.63	4.13	2.91	0.47	2.88	0.52	17.33	1.66	3.64	-0.40
April 2026	10.83	1.37	15.94	1.81	4.28	3.22	5.04	1.49	15.30	-0.27	1.54	-0.96

Three regions went upwards (YoY): Western Area from 14.63 percent in March 2026 to 15.94 percent in April 2026; Eastern region from 2.91 percent in March 2026 to 4.28 percent in April 2026 and Southern region from 2.88 percent in March 2026 to 5.04 percent April 2026.

Two regions went downwards (YOY): Northern region from 17.33 percent in March 2026 to 15.30 percent in April 2026 and North-west region from 3.64 percent in March 2026 to 1.54 percent in April 2026.

From the table above, it is observed that only the Western and Northern regions' inflation rates are above the national estimate for the month of April 2026; all other regions' estimates are below. It is further observed that three regions reported single-digit inflation rates, while the Northern region and Western area reported a double-digit in April 2026.

The figures below illustrate the yearly (1A) and monthly (1B) inflation rates at regional levels.

Figure 1A: Regional Year-on-Year (Yearly) inflation rates

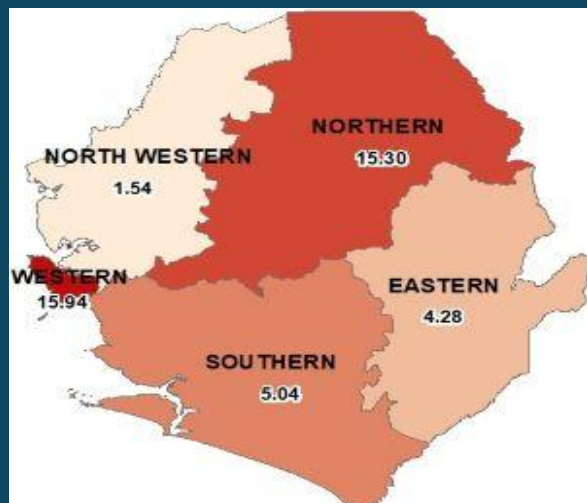


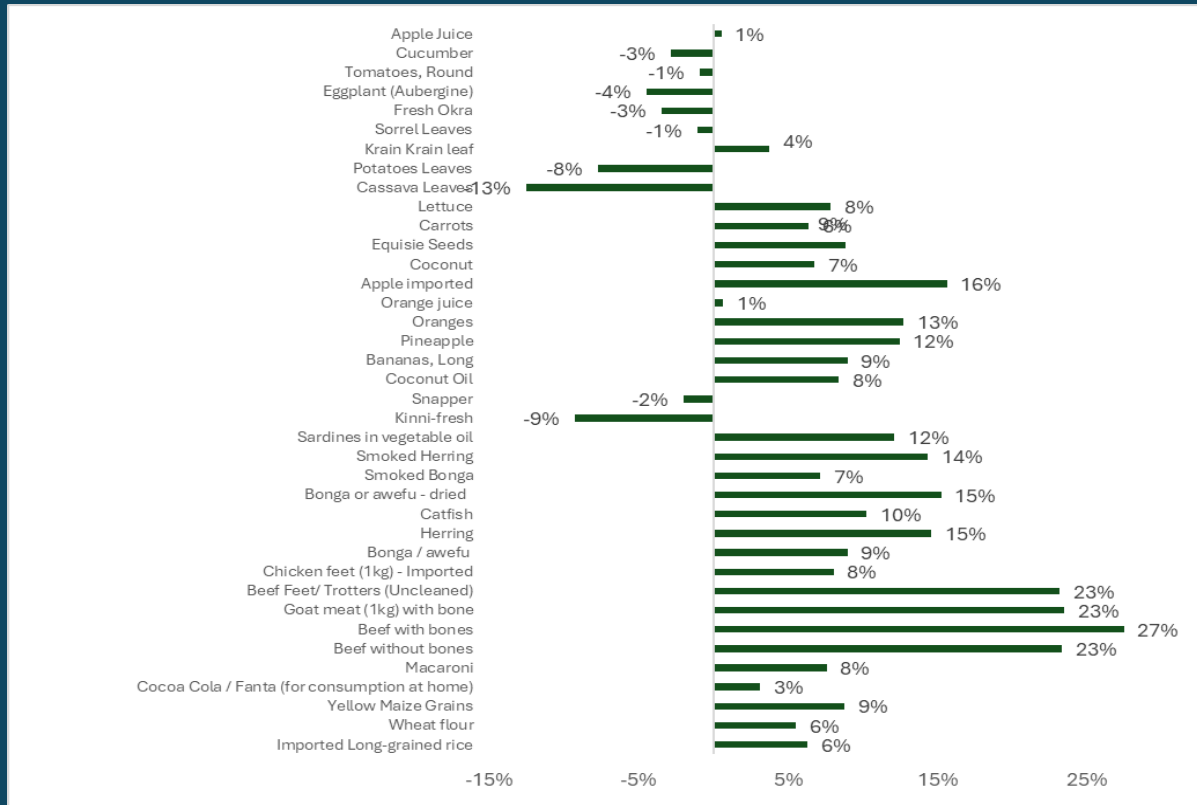
Figure 1B: Regional Month-on-Month (Monthly) inflation rates



3.0 FOOD³ AND NON-FOOD⁴ COMPONENTS

Food and non-alcoholic beverages inflation rate decreased by 1.02 percentage point from 4.58 percent in March 2026. In this division, food inflation decreased by 1.25 percentage point from 1.08 percent in March 2026 and it normally determines the direction of change for this division because it has a larger weight. The non-alcoholic beverages inflation increased by 5.72 percentage points from 91.92 percent in March 2026.

Figure 2.1: Changes in the average prices of selected Food and non-alcoholic items



The inflation rate for non-food component increased from 14.68 percent in March 2026 to 16.62 percent in April 2026; that is 1.94 percentage points increase. In this component, three divisions went up, seven went down and one non-mover.

³ Food and Non-Alcoholic Beverages

⁴ All other main COICOP Functions/divisions excluding Food and Non-Alcoholic Beverages

Figure 2.1a: Percentage point change in the Inflation rates of Non-Food components

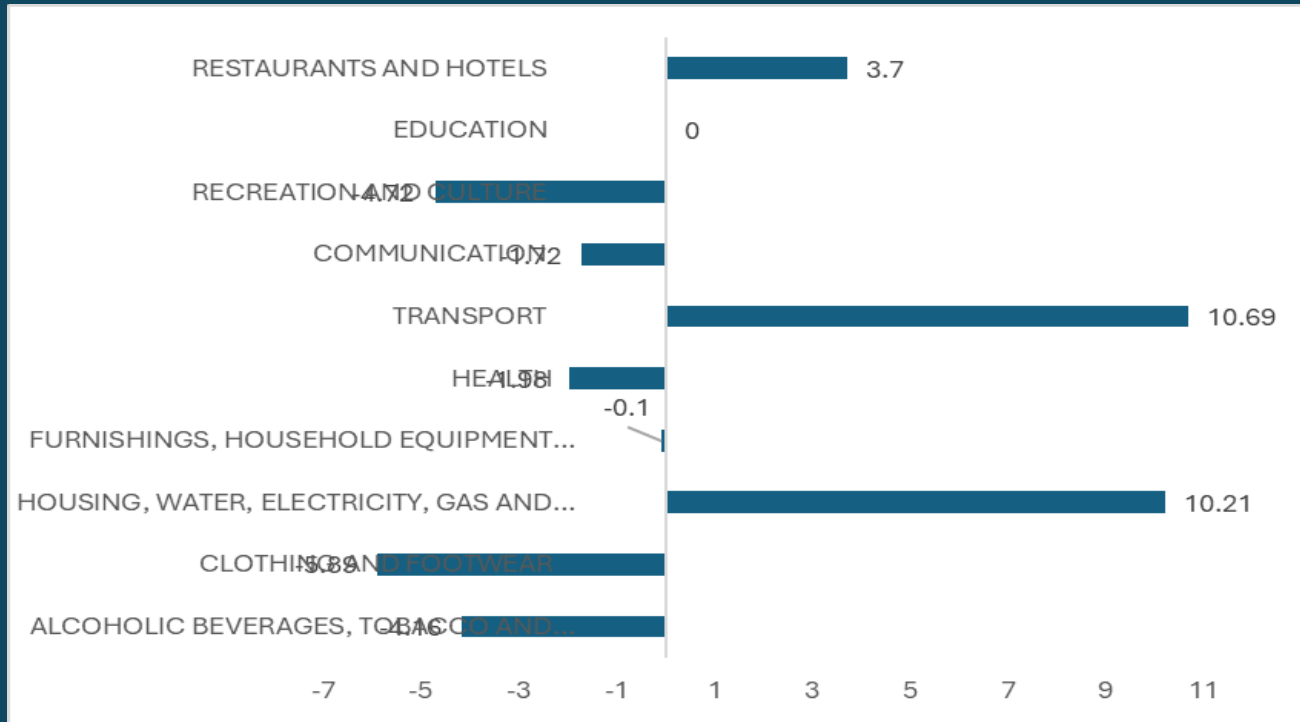
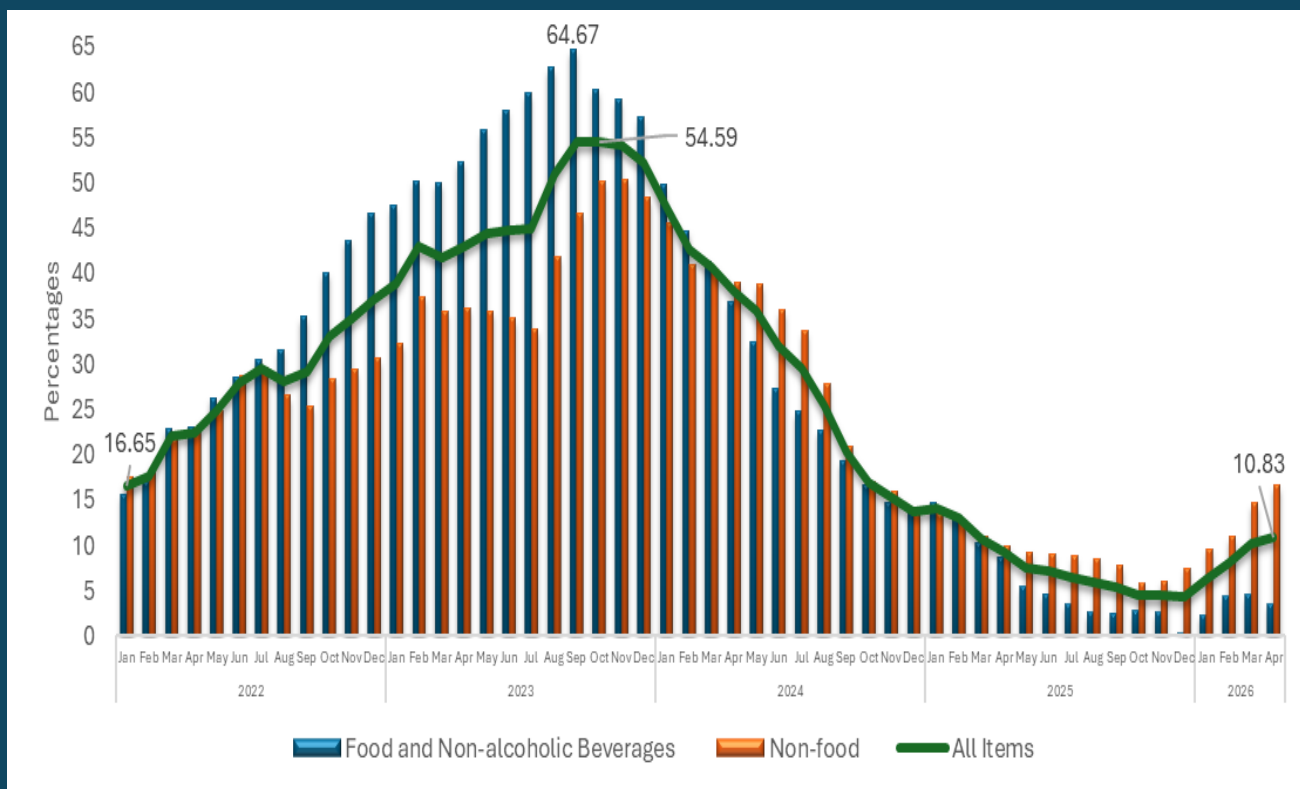


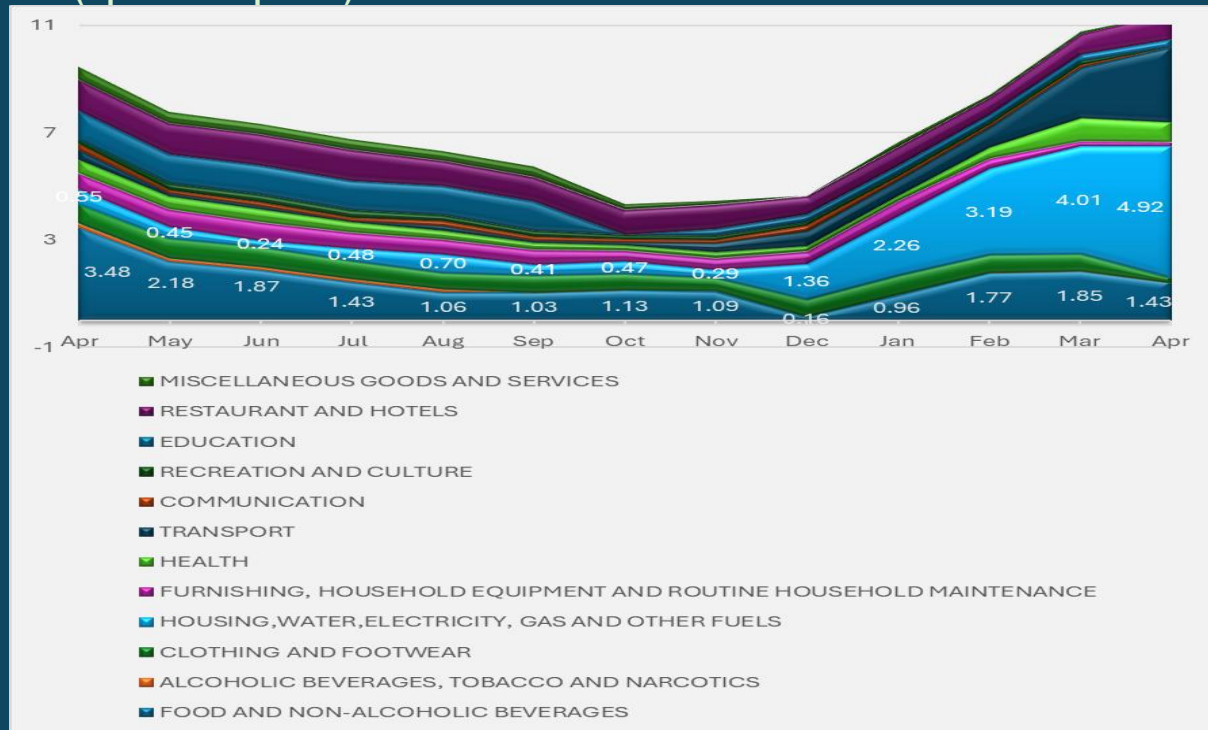
Figure 2.2: Trends in Inflation rates for Food, Non-food and All items (YoY) 2022 – 2026



4.0 IMPACT CONTRIBUTIONS OF COICOP DIVISIONS TO ANNUAL INFLATION RATE (YoY)

The annual National Consumer Price Inflation (year-on-year) for April 2026 is 10.83 percent, up by 0.59 percentage points from 10.24 percent in March 2026. Impact analyses, relative to the weights of the divisions, show: Housing, water, Electricity, Gas and other Fuel; and Transport made the most impact on inflation.

Figure 3: Impact contributions of the COICOP divisions to inflation rate (April 25 – April 26)



Concluding Note: A double-digit inflation rate has been recorded for a second month since March 2025. We noted that the headline inflation rate increased for three COICOP divisions in April 2026. Also, three regions reported single-digit inflation rates; and two regions reported double-digits. Finally, we observed that the national estimate is above all other regions' estimates, except for the Western and Northern Regions' estimates.

NOTE: The Sierra Leone national inflation rate measures the change in the average price indexes, from month to month, of the goods and services bought by households, in Freetown, Bo, Kenema, Kono, Makeni, Port Loko-Kambia and include all expenditure groups. Prices are collected for at least 440 items. All prices collected are the prevailing retail market prices from six (6) markets in Freetown and, three (3) Markets each in Bo, Kenema, Kono, Makeni, Port Loko-Kambia and for weekly prices and other outlets for monthly items whose prices are less likely to fluctuate rapidly. We are using the Modified Laspeyres formula to compute indices according to the Classification of Individual Consumption by Purpose (COICOP) with 12 functions. Sierra Leone has recently rebased the CPI to December 2021, increased the number of items in the basket and expanded the coverage to North-West region.

Table 2: National and Western Region CPI, Year-on-Year and Monthly Inflation Rates

	National CPI (December 2021=100)			Western Area/Freetown CPI (December 2021=100)		
	CPI	Year-on- Year % Change	Monthly Change	CPI	Year-on – Year % Change	Monthly Change
2021						
January	86.89	11.50	2.48	88.05	9.28	2.28
February	88.18	10.88	1.48	88.55	7.55	0.57
March	88.92	8.96	0.84	90.16	7.90	1.82
April	91.35	9.61	2.73	91.84	8.11	1.86
May	91.75	9.80	0.44	92.56	7.72	0.78
June	92.35	10.20	0.65	93.58	10.17	1.10
July	93.77	10.50	1.54	93.96	8.74	0.41
August	95.82	10.88	2.19	95.87	9.58	2.03
September	96.98	11.64	1.21	96.83	9.55	1.00
October	97.64	14.55	0.68	98.1	14.55	1.31
November	97.92	15.77	0.29	98.75	15.55	0.66
December	100.00	17.94	2.12	100.00	16.16	1.27
Average	93.46	11.85	1.39	94.02	10.41	1.26
2022						
January	101.36	16.65	1.36	100.57	14.22	0.57
February	103.69	17.59	2.30	102.76	16.05	2.18
March	108.54	22.06	4.68	108.21	20.02	5.30
April	111.85	22.44	3.05	110.28	20.08	1.91
May	114.57	24.87	2.43	112.97	22.05	2.44
June	118.16	27.95	3.13	117.13	25.17	3.68
July	121.40	29.47	2.74	119.38	27.05	1.92
August	122.79	28.15	1.14	120.23	25.41	0.71
September	125.20	29.10	1.96	121.51	25.49	1.06
October	129.84	32.98	3.71	129.71	32.22	6.75
November	132.24	35.05	1.85	130.37	31.94	0.51
December	137.09	37.09	3.67	135.93	35.93	4.26
Average	118.89	26.95	2.67	117.42	24.64	2.61
2023						
January	140.36	38.99	2.39	136.73	35.96	0.59
February	147.98	42.96	5.43	144.97	41.08	6.03
March	153.58	41.74	3.78	149.90	38.53	3.40
April	160.00	43.05	4.00	155.72	41.20	3.49
May	165.47	44.43	3.42	160.61	42.17	3.14
June	171.11	44.81	3.41	166.98	42.56	3.97
July	176.00	44.98	2.86	171.82	43.93	2.90
August	185.34	50.94	5.31	183.73	52.82	6.93
September	193.41	54.48	4.35	191.35	57.48	4.15
October	200.72	54.59	3.78	199.71	53.97	4.37
November	203.91	54.20	1.59	203.52	56.11	1.91
December	208.59	52.16	2.30	207.26	52.48	1.84
Average	175.54	46.62	3.55	172.69	45.95	3.56

Table 2: (Cont....)

	National CPI (December 2021=100)			Western Area/Freetown CPI (December 2021=100)		
	CPI	Year-on-Year % Change	Monthly Change	CPI	Year-on-Year % Change	Monthly Change
2024						
January	207.69	47.42	-0.43	205.35	48.97	-0.92
February	211.37	42.59	1.77	209.31	43.82	1.93
March	216.44	40.69	2.40	214.79	42.75	2.62
April	220.89	38.06	2.06	217.28	39.53	1.16
May	224.77	35.84	1.76	222.89	38.78	2.58
June	225.11	31.56	0.15	222.54	33.27	-0.16
July	227.20	29.09	0.93	225.82	31.43	1.47
August	231.95	25.15	2.09	228.15	24.18	1.03
September	233.86	20.91	0.82	231.22	20.84	1.35
October	234.69	16.92	0.35	231.38	15.86	0.07
November	235.34	15.41	0.28	233.68	14.82	0.99
December	237.33	13.78	0.85	235.46	13.61	0.76
Average	225.55	29.79	1.09	223.16	30.66	1.07
2025						
January	236.83	14.03	-0.21	237.87	15.84	1.02
February	239.03	13.09	0.93	243.81	16.48	2.50
March	239.61	10.71	0.24	242.76	13.02	0.43
April	241.61	9.38	0.83	244.36	12.46	0.66
May	241.73	7.55	0.05	243.35	9.18	-0.41
June	241.09	7.10	-0.26	242.43	8.94	-0.38
July	241.85	6.45	0.32	244.36	8.21	0.80
August	245.51	5.85	1.51	246.48	8.03	0.87
September	246.40	5.36	0.36	249.14	7.75	1.08
October	245.10	4.44	-0.53	245.80	6.23	-1.34
November	246.09	4.57	0.40	247.77	6.03	0.80
December	247.65	4.35	0.63	250.04	6.19	0.92
Average	242.71	7.74	0.36	244.85	9.86	0.58
2026						
January	251.94	6.38	1.73	258.39	8.63	3.34
February	258.26	8.05	2.51	267.24	9.61	3.43
March	264.14	10.24	2.28	278.27	14.63	4.13
April	267.77	10.83	1.37	283.30	15.94	1.81

Table 3: National Consumer Price Index by Main COICOP Groups (December 2021=100)

	Food and Non-Alcoholic Beverages	Alcoholic Beverages, Tobacco and Narcotics	Clothing and Footwear	Housing, Water, Electricity, Gas and Other Fuels	Furnishings, household equipment and routine household maintenance	Health	Transport	Communication	Recreation and Culture	Education	Restaurant and Hotels	Miscellaneous Goods and Services	All Items
Weight	40.3	1	7.7	8.9	5.6	7.6	8.6	4.7	2.6	3.1	6.1	3.9	100.00
Jan-21	88.12	80.29	92.83	84.33	82.56	89.69	81.64	93.65	78.62	65.21	76.7	90.99	86.89
Feb-21	90.41	80.84	91.95	88.41	85.01	86.73	84.93	93.87	79.03	65.21	78.43	92.36	88.18
Mar-21	90.88	83.38	90.61	89.53	85.15	90.14	85.10	92.19	79.02	65.21	78.01	92.22	88.92
Apr-21	95.36	87.89	93.51	90.09	86.13	89.45	85.5	92.19	79.36	65.21	79.63	91.61	91.35
May-21	96.34	87.34	91.12	90.31	86.43	90.08	84.89	92.19	79.78	65.21	84.02	92.18	91.75
Jun-21	97.22	88.65	92.22	91.89	88.29	89.09	85.32	92.19	80.39	65.56	84.31	89.92	92.35
Jul-21	98.03	94.51	93.68	92.22	92.84	89.96	92.35	92.2	81.54	65.56	85.34	91.87	93.77
Aug-21	100.31	98.11	95.31	94.64	92.70	91.46	99.61	92.22	82.67	65.56	85.67	92.41	95.82
Sept-21	99.83	100.05	95.13	95.87	95.75	94.21	99.45	92.21	86.21	78.23	93.04	97.60	96.98
Oct-21	99.76	99.84	98.37	95.71	96.40	94.46	99.17	92.22	90.18	86.86	93.79	99.51	97.64
Nov-21	99.21	99.17	98.38	96.05	98.16	94.92	99.71	93.83	94.80	94.02	95.35	100.74	97.92
Dec-21	100.00	100.00	100.00	100.00	100.00	100.00	100.00	100.00	100.00	100.00	100.00	100.00	100.00
Jan-22	101.94	99.63	96.04	101.08	109.54	101.29	99.13	100.17	102.54	100.00	101.72	101.51	101.36
Feb-22	105.86	98.85	97.29	103.12	110.56	103.13	98.48	100.88	104.85	100.00	104.92	102.84	103.69
Mar-22	111.75	103.03	98.32	105.97	109.63	107.18	115.52	101.32	107.26	100.00	108.62	104.71	108.54
Apr-22	117.29	104.39	100.38	107.21	114.59	105.64	117.57	102.42	109.12	100.00	112.64	107.62	111.85
May-22	121.67	105.38	102.14	107.96	116.93	108.31	116.74	101.88	112.45	100.00	117.79	110.36	114.57
Jun-22	124.92	109.68	104.38	109.41	119.44	109.47	129.86	103.10	116.08	96.81	123.56	115.00	118.16
Jul-22	128.01	111.18	106.58	111.54	124.78	107.54	139.33	102.83	122.51	96.81	129.40	118.73	121.40
Aug-22	132.01	113.55	107.79	112.45	131.18	110.87	124.67	101.39	124.23	96.81	131.91	121.32	122.79
Sept-22	134.97	103.16	109.41	115.94	132.78	116.62	129.22	102.91	125.29	90.18	132.93	121.97	125.20
Oct-22	139.80	107.79	111.84	117.19	140.62	118.74	140.95	103.28	129.83	90.18	139.56	127.14	129.84
Nov-22	142.49	112.07	116.78	117.8	148.95	122.01	140.14	104.17	132.20	90.18	137.25	132.92	132.24
Dec-22	146.70	114.84	121.52	130.89	154.1	126.98	144.89	103.96	134.55	90.18	141.74	138.39	137.09

Table 3: (Cont....)

	Food and Non-Alcoholic Beverages	Alcoholic Beverages, Tobacco and Narcotics	Clothing and Footwear	Housing, Water, Electricity, Gas and Other Fuels	Furnishings, household equipment and routine household maintenance	Health	Transport	Communication	Recreation and Culture	Education	Restaurant and Hotels	Miscellaneous Goods and Services	All Items
Jan-23	150.37	119.76	127.70	134.13	158.63	132.61	130.97	124.13	139.00	90.18	144.61	144.95	140.36
Feb-23	159.01	127.98	132.9	135.76	166.68	134.68	141.35	129.21	155.51	90.18	162.14	152.27	147.98
Mar-23	167.02	133.18	135.44	137.08	172.92	143.45	140.99	133.25	159.34	90.18	169.94	158.98	153.58
Apr-23	178.67	138.68	139.34	138.11	184.17	145.79	141.96	133.49	162.60	90.18	177.58	154.36	160.00
May-23	189.58	143.88	136.79	136.87	179.71	146.22	143.27	137.36	169.35	90.18	193.20	157.57	165.47
Jun-23	197.36	150.95	143.86	142.71	183.09	151.28	142.27	138.77	169.73	90.18	198.84	169.78	171.11
Jul-23	204.73	152.42	147.57	141.10	184.56	153.89	145.73	142.36	180.68	90.18	205.94	177.40	176.00
Aug-23	214.85	154.45	152.57	145.03	188.62	162.36	177.30	144.37	186.69	90.18	214.41	181.67	185.34
Sept-23	222.25	159.36	154.27	153.17	193.74	171.86	196.13	150.82	196.48	90.18	228.56	185.30	193.41
Oct-23	224.15	161.86	164.26	157.38	201.02	184.15	209.70	147.56	208.27	134.28	242.14	198.66	200.72
Nov-23	226.81	163.16	165.67	158.54	207.04	193.14	215.01	151.03	213.33	134.28	246.1	195.69	203.91
Dec-23	230.63	168.34	168.44	177.95	218.36	200.8	217.23	147.82	215.19	134.28	242.62	197.42	208.59
Jan-24	227.21	169.75	170.24	178.51	220.21	202.1	216.51	146.81	218.26	134.28	245.36	195.74	207.69
Feb-24	231.04	173.16	174.18	182.05	225.91	207.08	217.88	147.51	222.68	134.28	252.07	198.77	211.37
Mar-24	236.89	175.51	177.04	193.04	227.10	211.14	219.52	149.19	224.16	134.28	263.97	202.47	216.44
April-24	244.62	179.09	181.09	189.00	233.35	212.60	219.28	147.35	230.87	134.28	273.12	209.05	220.89
May-24	251.04	179.91	182.32	190.26	236.19	211.41	226.91	149.85	228.82	134.28	275.17	213.22	224.77
Jun-24	251.14	181.47	182.96	190.72	235.02	212.81	227.87	148.03	229.00	134.28	274.93	217.67	225.11
Jul-24	255.41	181.81	184.04	190.40	236.90	213.25	227.67	150.50	233.89	134.28	275.13	215.97	227.20
Aug-24	263.73	183.05	188.83	191.16	240.04	216.53	222.84	148.45	238.56	134.28	285.20	223.56	231.95
Sept-24	265.39	186.60	190.16	196.78	240.25	223.27	221.47	150.20	240.64	134.28	288.62	220.05	233.86
Oct-24	261.69	187.5	191.63	196.19	243.62	223.39	221.32	150.67	246.5	181.23	289.47	229.52	234.69
Nov-24	260.24	190.11	192.36	200.41	244.57	223.55	219.81	152.30	247.84	181.23	298.47	234.23	235.34
Dec-24	262.67	195.04	191.75	199.96	243.65	227.6	219.23	150.25	249.82	181.23	309.86	239.36	237.33
Jan-25	260.79	191.22	192.9	202.48	247.15	225.45	220.4	152.89	251.29	181.23	312.75	226.79	236.83
Feb-25	262.12	190.88	195.74	202.89	253.12	227.47	226.55	153.63	252.36	181.23	317.26	228.35	239.03
Mar-25	261.22	195.88	197.64	203.93	265.85	223.13	227.41	153.69	244.81	181.23	320.63	233.02	239.61
Apr-25	265.74	199.02	198.85	200.68	257.17	226.87	229.4	154.11	247.26	181.23	323.54	235.95	241.61
May-25	264.65	200.89	200.25	199.94	263.14	224.59	229.8	154.46	250.57	181.23	327.25	235.33	241.73
Jun-25	262.76	200.82	201.28	195.91	263.86	226.15	230.65	153.74	254.79	181.23	326.60	238.77	241.09
Jul-25	264.50	198.24	200.52	200.69	261.74	224.16	229.10	154.98	257.74	181.23	327.40	237.15	241.85
Aug-25	270.66	197.39	204.75	206.09	262.88	225.95	227.81	154.88	258.59	181.23	327.89	243.49	245.51
Sept-25	272.19	181.82	207.30	205.81	263.59	230.46	224.14	155.39	259.71	181.23	330.91	242.54	246.40
Oct-25	269.01	181.53	207.83	206.5	260.14	229.72	224.71	154.74	261.06	180.55	334.09	240.08	245.10
Nov-25	267.25	186.73	205.69	206.98	263.83	229.78	228.38	156.51	263.16	196.73	342.4	242.5	246.09
Dec-25	263.72	187.63	208.14	230.56	262.97	233.1	234.2	156.93	263.94	196.79	343.43	239.44	247.65
Jan-26	266.98	188.08	211.31	253.85	270.03	231.83	235.92	157.02	264.56	196.79	349.22	235.53	251.94
Feb-26	273.61	190.11	213.64	275.7	269.93	239.8	247.16	155.89	265.5	196.79	350.18	233.4	258.26
Mar-26	273.19	192.3	214.58	295.73	273.07	248.87	278.05	156.63	259.37	196.79	360.53	237.59	264.14
Apr-26	275.19	187.1	204.17	311.51	263.92	248.55	305.02	154.41	250.29	196.79	375.76	235	267.77